

Surgical Site Infection Surveillance – Advancing the Prevention Agenda

Prof. Judith Tanner, De Montfort University
A Webber Training Teleclass

Surgical Site Infection Surveillance – Advancing the Prevention Agenda

Professor Judith Tanner
Chair of Clinical Nursing Research
De Montfort University

Hosted by Vanessa Whatley
vanessa@webbertraining.com

www.webbertraining.com February 7, 2012

Session plan

- The importance of rigorous surgical site infection (SSI) surveillance
- Limitations of current SSI surveillance
- An ideal SSI surveillance programme
- Benefits arising from rigorous SSI surveillance

Why do we need rigorous surveillance ?

- Identify scale of the problem
 - underestimate SSI rate
 - not important
 - no funding for interventions
 - underestimate cost of SSIs
- Benchmarking not valid

Commonest HCAs

- Gastrointestinal 22%
- Respiratory 20%
- Urinary Tract 19.7%
- Surgical site 13.8%
- Skin and soft tissue 10.5%
- Primary blood 6.8%
- Other 3%

Third prevalence survey of HCAs in Acute Hospitals 2006

Why do we need rigorous surveillance ?

- Identify scale of the problem
 - underestimate SSI rate
 - not important
 - no funding for interventions
 - underestimate cost of SSIs
- Benchmarking not valid

Limitations of current system ?

.

Hosted by Vanessa Whatley vanessa@webbertraining.com
www.webbertraining.com

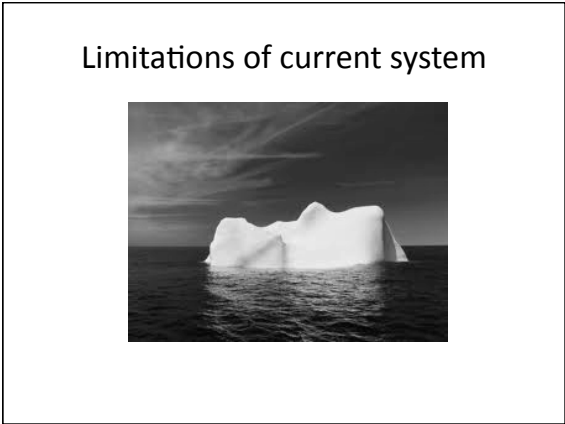
Surgical Site Infection Surveillance – Advancing the Prevention Agenda

Prof. Judith Tanner, De Montfort University
A Webber Training Teleclass

“The Department’s approach to mandatory national surveillance means there is still no grip on surgical site infections.”

“Progress is being hit by a lack of decent data.”

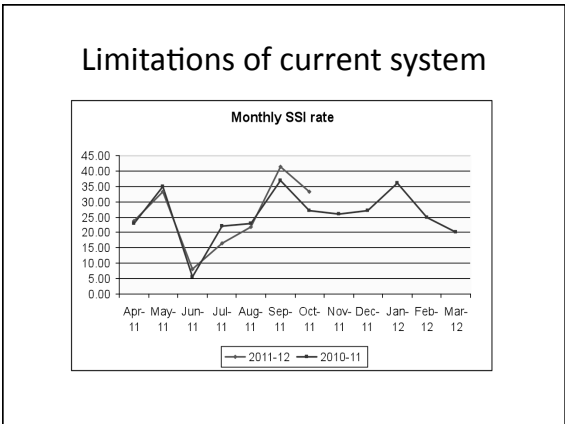
House of Commons Public Accounts Committee, November 2009



- Limitations of current system
- In-patients, re-admissions, post discharge
 - Various methods used
 - 3 month duration
 - Voluntary versus mandatory

- Limitations of current system
- In-patients, re-admissions, post discharge
 - Various methods used
 - 3 month duration
 - Voluntary versus mandatory

- Limitations of current system
- In-patients, re-admissions, post discharge
 - Various methods used
 - 3 month duration
 - Voluntary versus mandatory



Surgical Site Infection Surveillance – Advancing the Prevention Agenda

Prof. Judith Tanner, De Montfort University
A Webber Training Teleclass

Limitations of current system

- In-patients, re-admissions, post discharge
- Various methods used
- 3 month duration
- Voluntary versus mandatory

The ideal SSI surveillance programme



The ideal SSI surveillance programme

- Full 30 day follow up – in patient, readmission, post discharge
- Same method
- Duration ?
- Mandatory ?
- Level I and Level II data
- The deep / superficial debate
- Compliance data
- Feedback

The ideal SSI surveillance programme

- Full 30 day follow up – in patient, readmission, post discharge
- Same method
- Duration ?
- Mandatory ?
- Level I and Level II data
- The deep / superficial debate
- Compliance data
- Feedback

The ideal SSI surveillance programme

- Full 30 day follow up – in patient, readmission, post discharge
- Same method
- Duration ?
- Mandatory ?
- Level I and Level II data
- The deep / superficial debate
- Compliance data
- Feedback

The ideal SSI surveillance programme

- Full 30 day follow up – in patient, readmission, post discharge
- Same method
- Duration ?
- Mandatory ?
- Level I and Level II data
- The deep / superficial debate
- Compliance data
- Feedback

Surgical Site Infection Surveillance – Advancing the Prevention Agenda

Prof. Judith Tanner, De Montfort University
A Webber Training Teleclass

The ideal SSI surveillance programme

- Full 30 day follow up – in patient, readmission, post discharge
- Same method
- Duration ?
- Mandatory ?
- Level I and Level II data
- The deep / superficial debate
- Compliance data
- Feedback

The ideal SSI surveillance programme

- Full 30 day follow up – in patient, readmission, post discharge
- Same method
- Duration ?
- Mandatory ?
- Level I and Level II data
- The deep / superficial debate
- Compliance data
- Feedback

The ideal SSI surveillance programme

- Full 30 day follow up – in patient, readmission, post discharge
- Same method
- Duration ?
- Mandatory ?
- Level I and Level II data
- The deep / superficial debate
- Compliance data
- Feedback

The ideal SSI surveillance programme

- Full 30 day follow up – in patient, readmission, post discharge
- Same method
- Duration ?
- Mandatory ?
- Level I and Level II data
- The deep / superficial debate
- Compliance data
- Feedback

The benefits of rigorous surveillance

- Rapid surveillance feedback
- Improve practice
- Trusts prepared to share data
- 'Real' SSI rates
- Benchmarking, commissioning, patient choice
- Effectiveness of interventions to reduce SSIs (including multicentre studies)

The benefits of rigorous surveillance

- Rapid surveillance feedback
- Improve practice
- Trusts prepared to share data
- 'Real' SSI rates
- Benchmarking, commissioning, patient choice
- Effectiveness of interventions to reduce SSIs (including multicentre studies)

Surgical Site Infection Surveillance – Advancing the Prevention Agenda

Prof. Judith Tanner, De Montfort University
A Webber Training Teleclass

The benefits of rigorous surveillance

- Rapid surveillance feedback
- Improve practice
- Trusts prepared to share data
- 'Real' SSI rates
- Benchmarking, commissioning, patient choice
- Effectiveness of interventions to reduce SSIs (including multicentre studies)

The benefits of rigorous surveillance


- Rapid surveillance feedback
- Improve practice
- Trusts prepared to share data
- 'Real' SSI rates
- Benchmarking, commissioning, patient choice
- Effectiveness of interventions to reduce SSIs (including multicentre studies)

The benefits of rigorous surveillance

- Rapid surveillance feedback
- Improve practice
- Trusts prepared to share data
- 'Real' SSI rates
- Benchmarking, commissioning, patient choice
- Effectiveness of interventions to reduce SSIs (including multicentre studies)

The benefits of rigorous surveillance

- Rapid surveillance feedback
- Improve practice
- Trusts prepared to share data
- 'Real' SSI rates
- Benchmarking, commissioning, patient choice
- Effectiveness of interventions to reduce SSIs (including multicentre studies)



8 February (FREE ... WHO Teleclass) **Behavioural Change in Infection Prevention and Control**
Speaker: Prof. Andreas Voss, Nimjen University, Netherlands

15 February (South Pacific Teleclass) **Outbreak of Vaccine-Preventable Diseases – Communicating the Science and Closing the Gaps**
Speaker: Dr. Nikki Turner, University of Auckland, New Zealand

23 February **The Biofilm Hypothesis of Chronic Infection**
Speaker: Dr. Phillip Stewart, Center for Biofilm Engineering, University of Montana

1 March **Developing a Sustainable and Effective Approach to Hygiene and Infection Prevention in Home and Everyday Settings**

www.webbertraining.com/schedulept.php

Hosted by Vanessa Whatley vanessa@webbertraining.com
www.webbertraining.com