

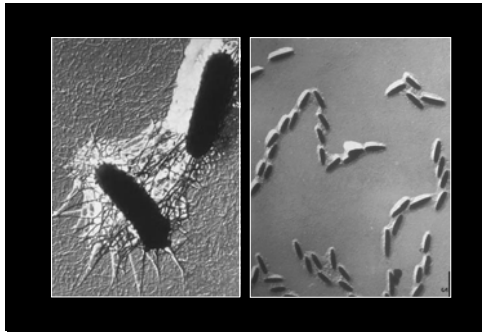
Slide 1

Essential Knowledge
In The Battle Against
Biofilms

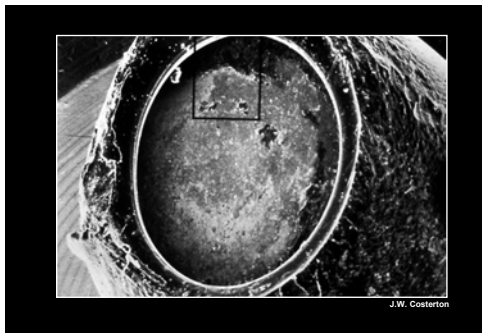
Presented by Dr. Bill Costerton
Hosted by Paul Webber

Copyright (2001) by the Center for Biofilm Engineering, Montana State University-Bozeman, Bozeman, MT 59717-3980, (406) 994-4770. All rights reserved. This material has been prepared for the Center for Biofilm Engineering and may represent material that has not been published, has not been peer reviewed, or is preliminary. Reproduction of, or presentation of, this material is prohibited without the consent of the authors.

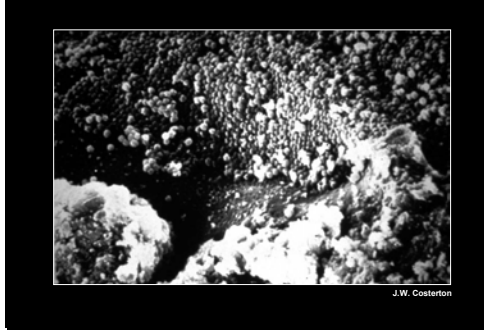
Slide 2



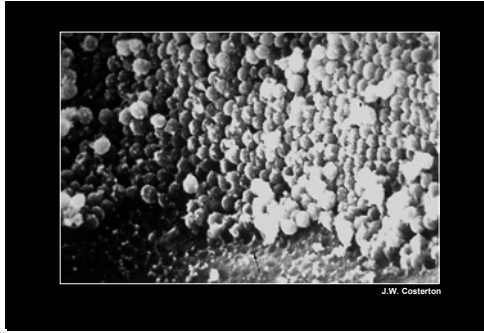
Slide 3



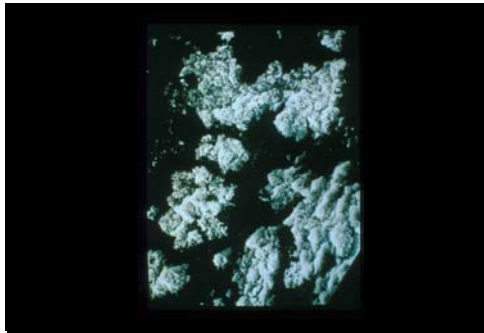
Slide 4



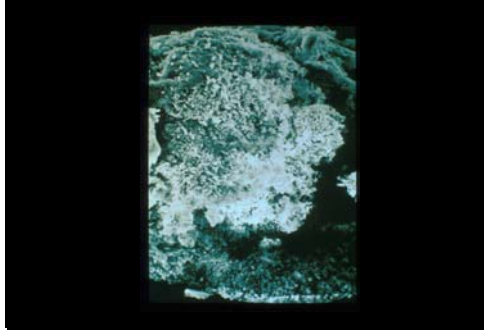
Slide 5



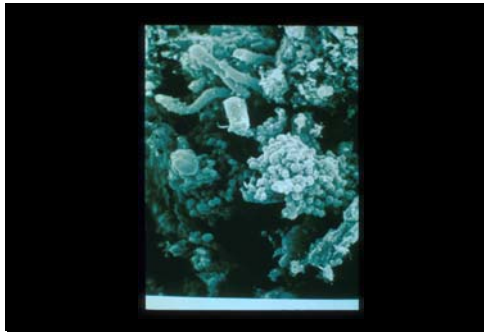
Slide 6



Slide 7



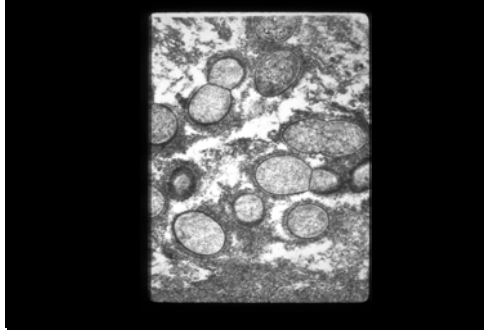
Slide 8



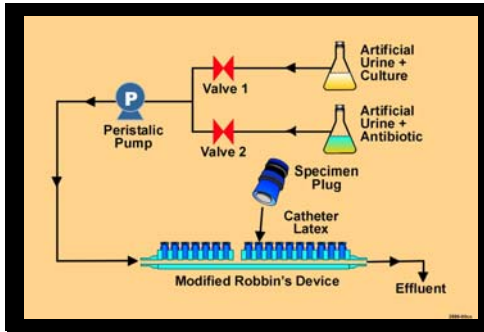
Slide 9



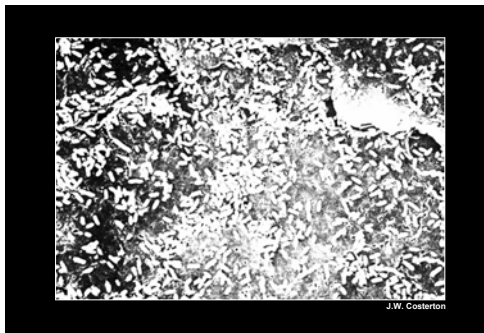
Slide 10



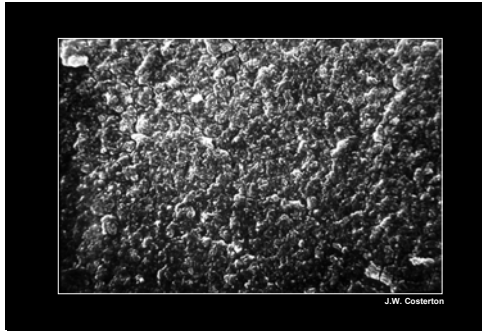
Slide 11



Slide 12



Slide 13

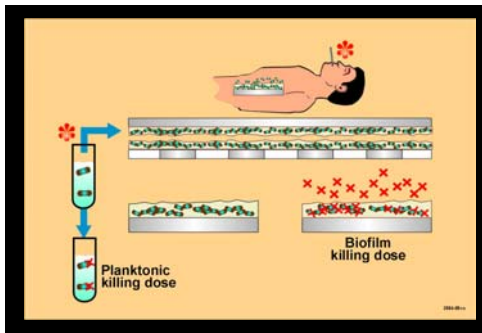


Slide 14

**Comparative Tobramycin Susceptibility
of Planktonic and Sessile Cells of
*Pseudomonas aeruginosa***

	Tobramycin	T = 0	T = 8	T = 12
Planktonic Viable	10 µg/ml	1.0×10^9 ml	1.2×10^9	3.0×10^6
	50 µg/ml	1.2×10^9	0	0
	100 µg/ml	0.9×10^9	0	0
Sessile Viable	100 µg/ml	5.8×10^8 cm ²	5.3×10^7	4.2×10^7
	1000 µg/ml	2.1×10^8	1.1×10^7	6.1×10^6

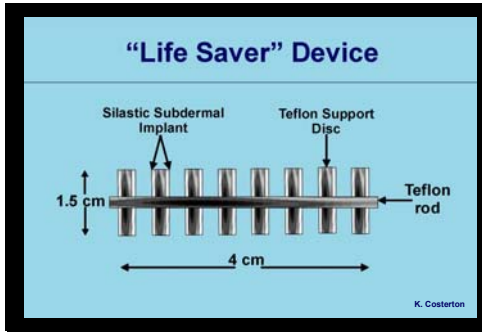
Slide 15



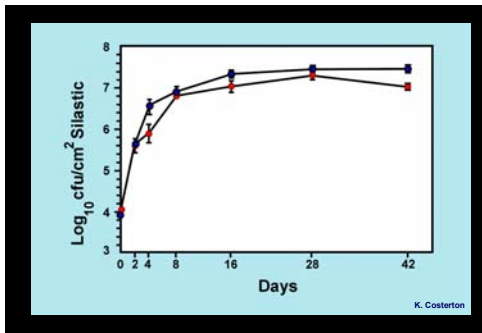
Slide 16



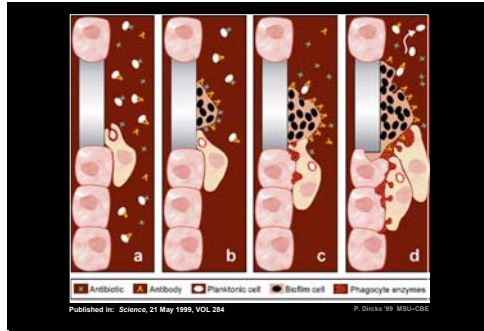
Slide 17



Slide 18



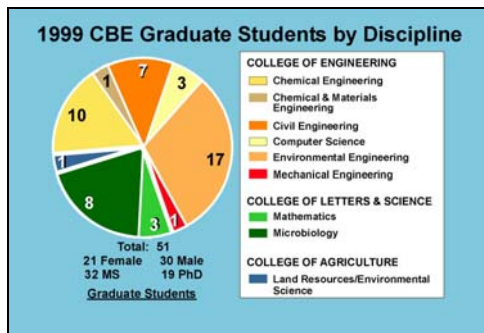
Slide 19



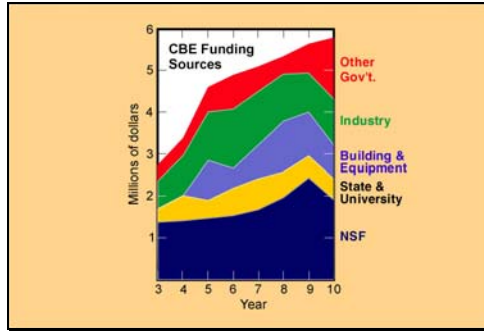
Slide 20



Slide 21



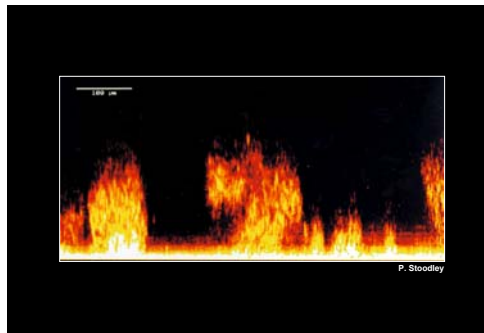
Slide 22



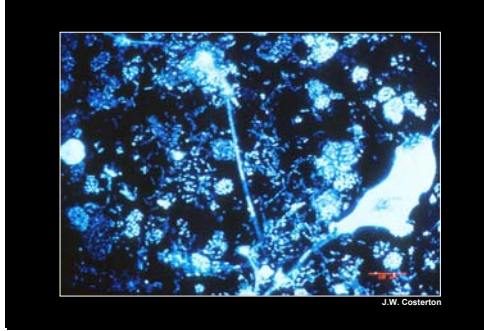
Slide 23



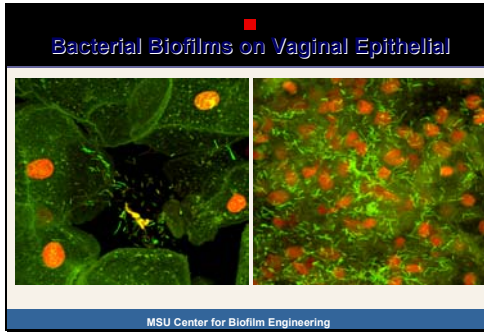
Slide 24



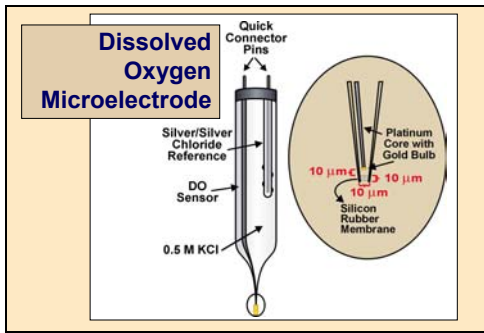
Slide 25



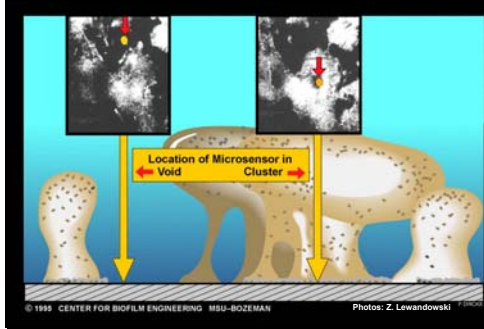
Slide 26



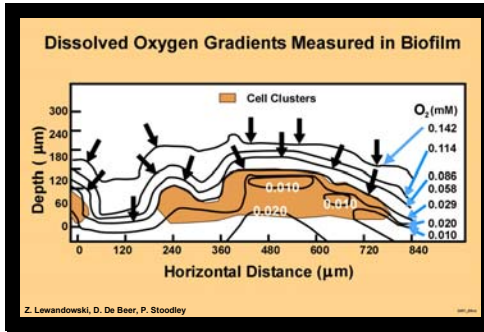
Slide 27



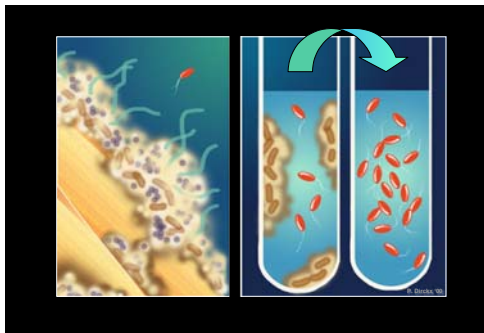
Slide 28



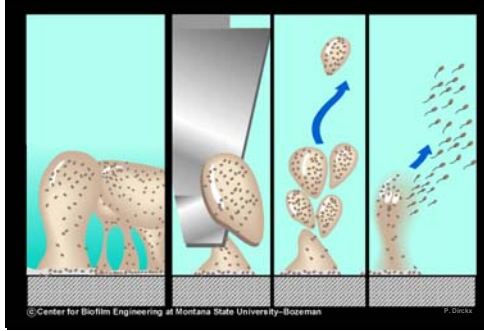
Slide 29



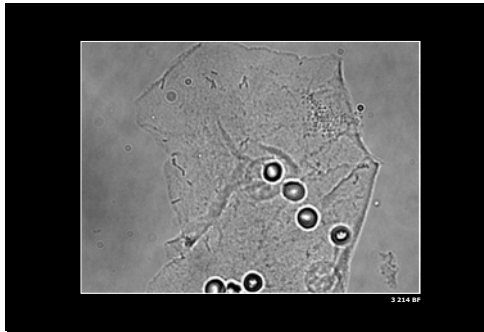
Slide 30



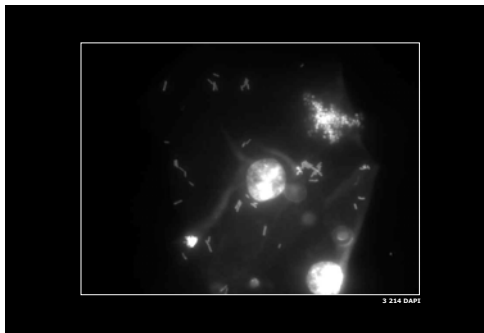
Slide 31



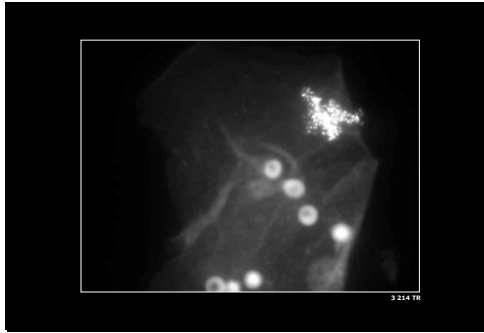
Slide 32



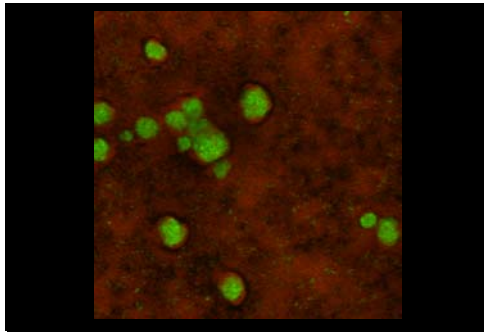
Slide 33



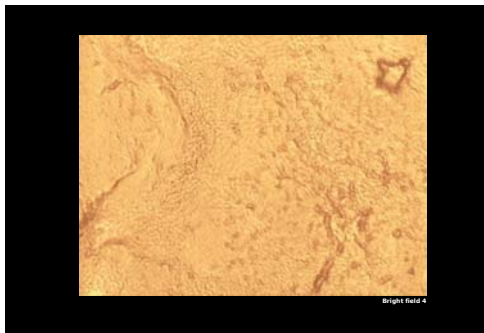
Slide 34



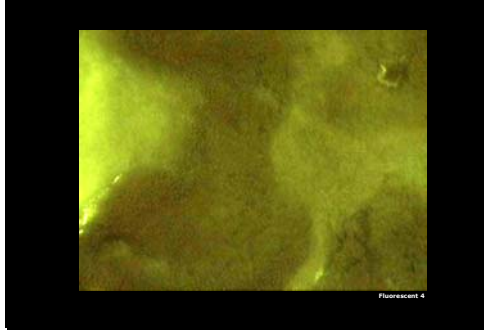
Slide 35



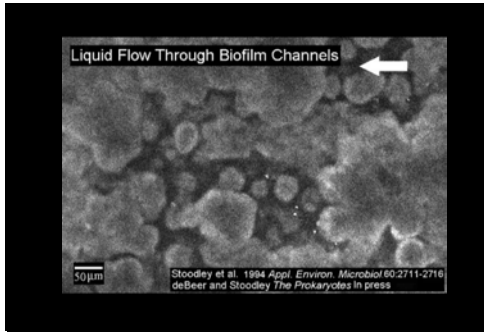
Slide 36



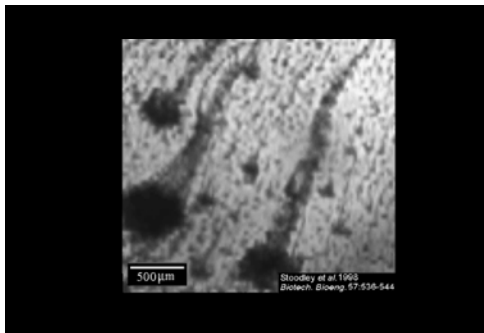
Slide 37



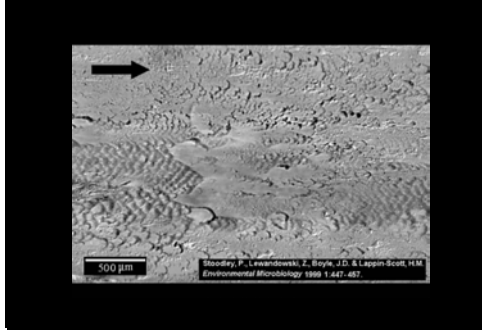
Slide 38



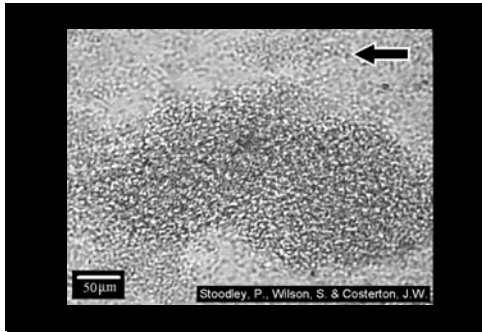
Slide 39



Slide 40



Slide 41



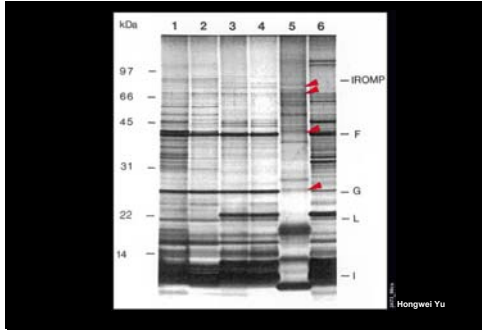
Slide 42



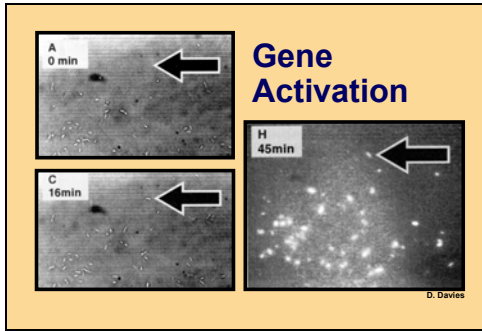
Slide 43



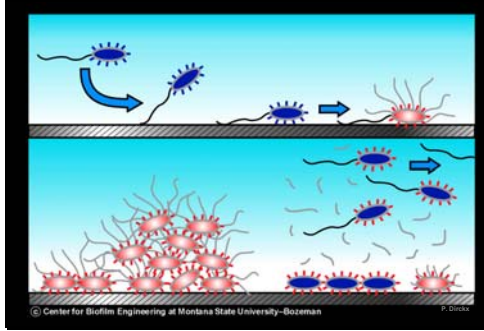
Slide 44



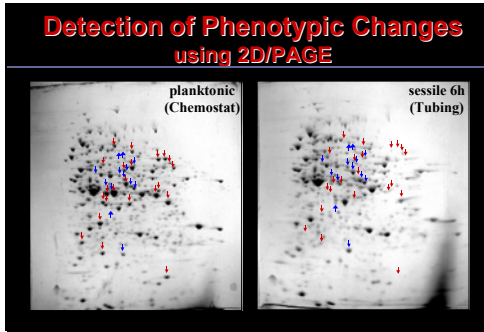
Slide 45



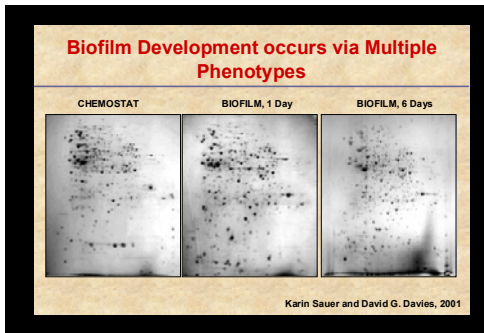
Slide 46



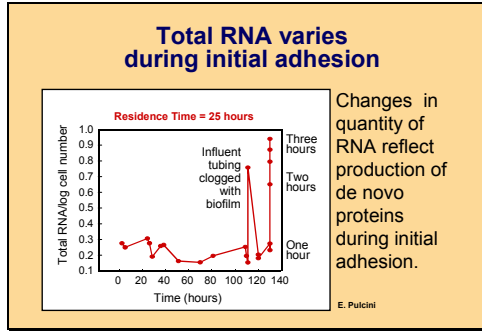
Slide 47



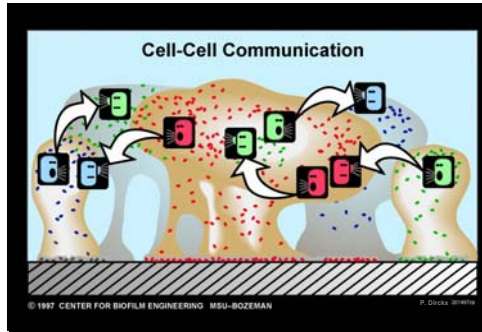
Slide 48



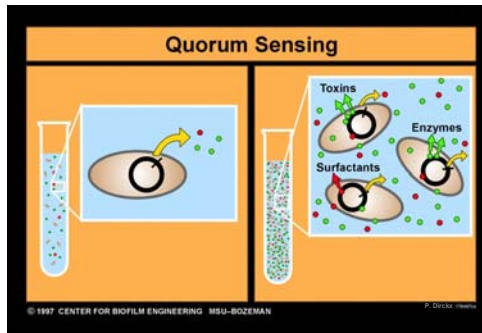
Slide 49



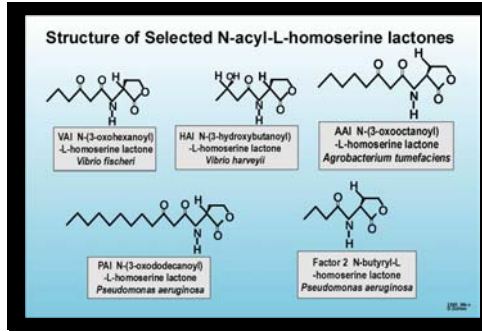
Slide 50



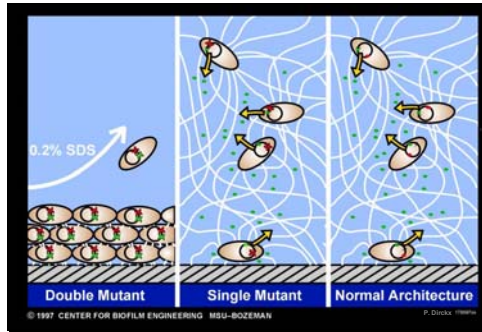
Slide 51



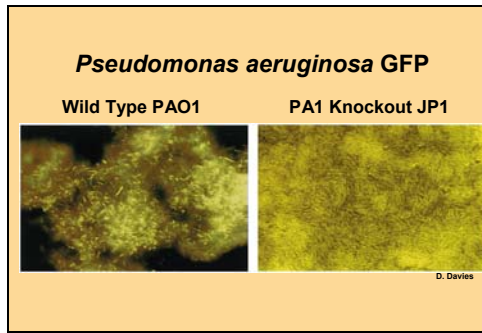
Slide 52



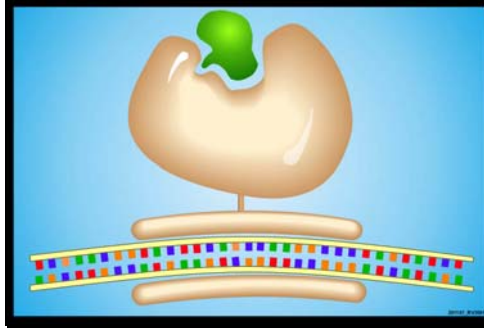
Slide 53



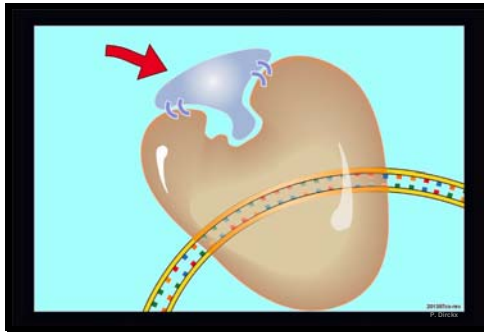
Slide 54



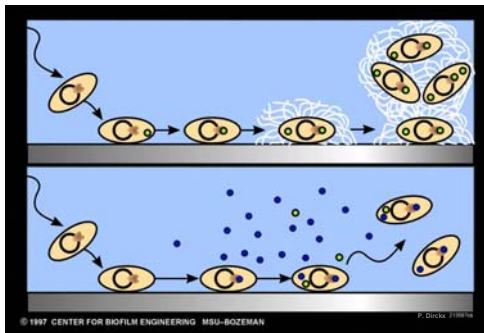
Slide 55



Slide 56



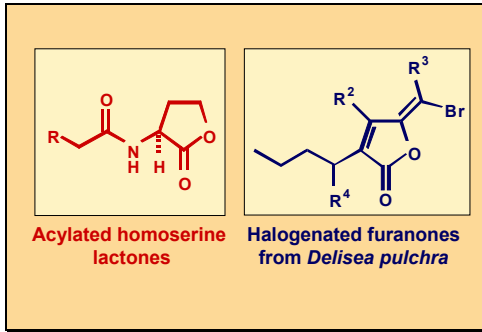
Slide 57



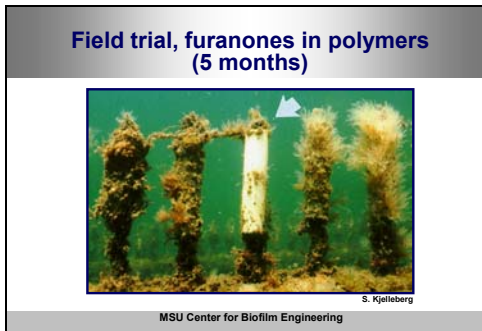
Slide 58



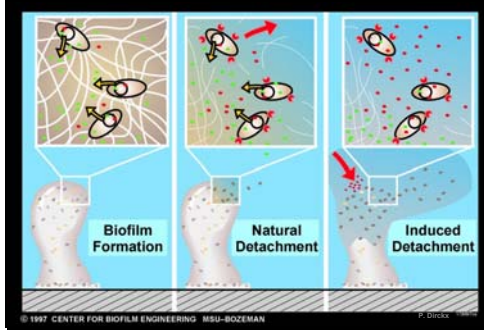
Slide 59



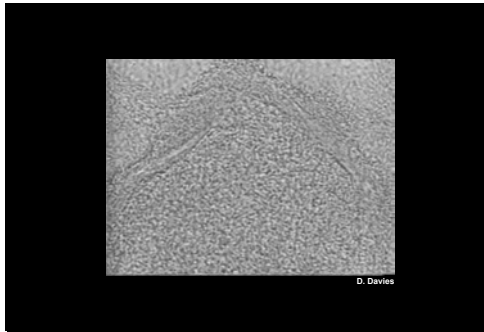
Slide 60



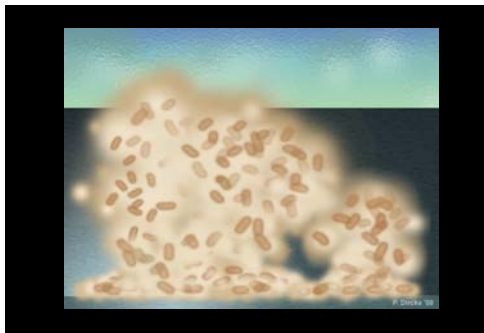
Slide 61



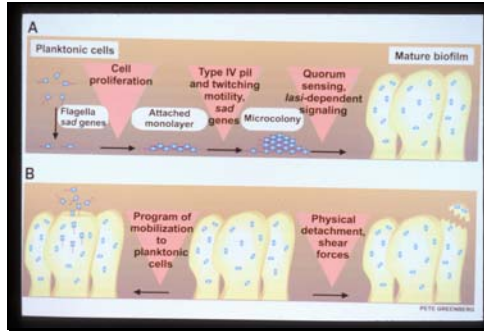
Slide 62



Slide 63



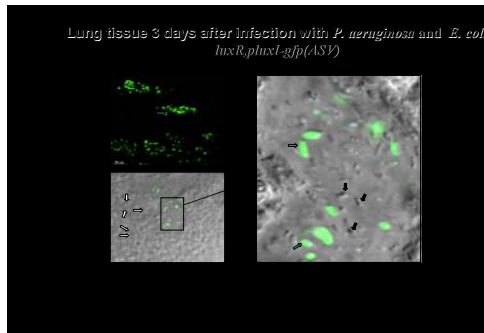
Slide 64



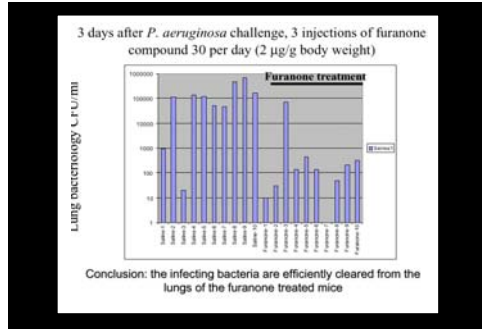
Slide 65

Dr. Michael GIVSKOV
Danish Technical University
Lyngby, DENMARK

Slide 66



Slide 67



Slide 68

<http://www.erc.montana.edu>

CENTER FOR BIOFILM ENGINEERING

- CBE Essentials: You are here, Use the links at left for: Basic info about biofilm science & engineering, CBE programs and events.
- Industry Connection: See how CBE solutions-oriented research addresses industrial biotech problems and opportunities.
- The CBE Workplace: Restricted access, Project Management, Internal Operations.
- Resource Library: Go here for: People, Publications, CBE Newsletter, Archives, Interdisciplinary, Glossary.

Image Library
People
Publications
CBE Newsletter
Archives
Interdisciplinary
Glossary

Slide 69

BIOFILMS 2003
Victoria, B.C. CANADA
November 1 – 6, 2003
